



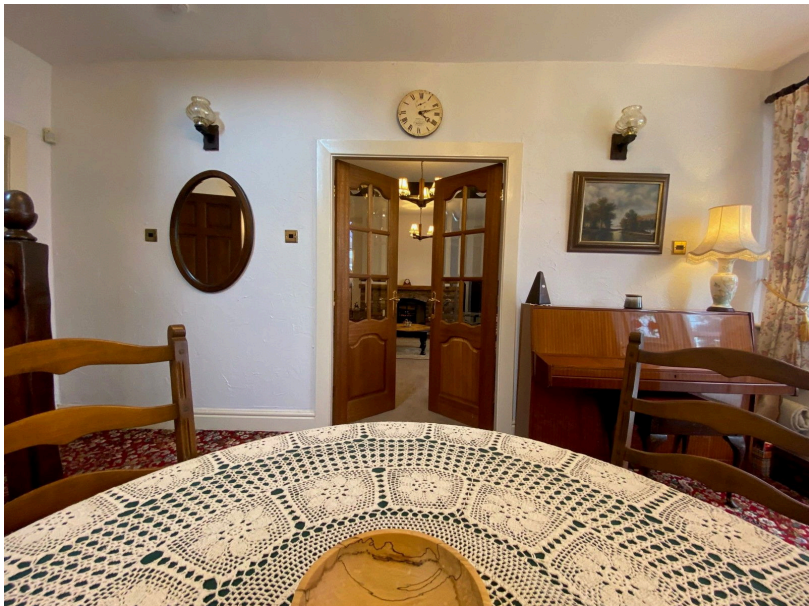
2 Limehurst House, Oaken Clough Drive, Ashton-under-Lyne

£399,950

🛏️ 4 🚿 2 🛋️ 2



- Character Property
- Two Receptions
- Immaculately Presented
- Downstairs WC
- Four Spacious Bedrooms
- Sought After Location
- Utility Room
- EPC Rating - D

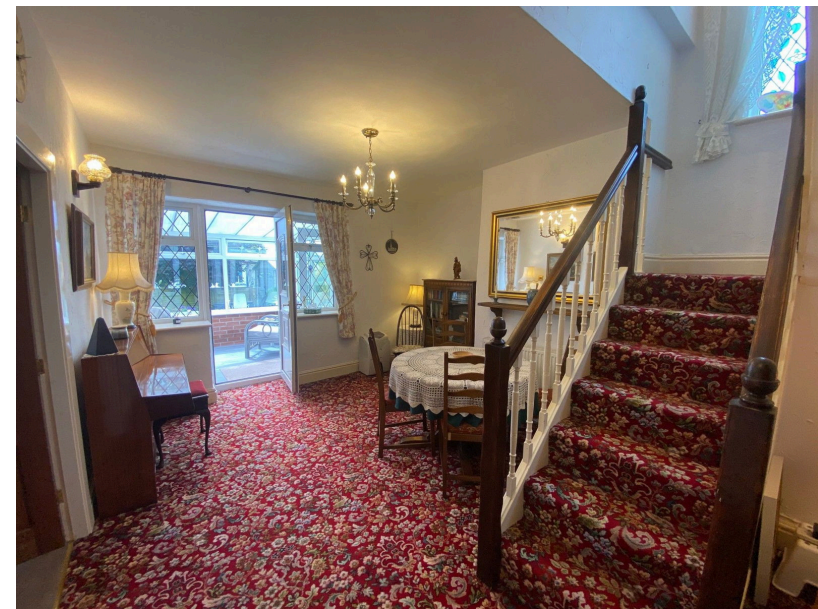


An immaculately presented Four bedroom End Terrace Character Property, exuding charm and individuality throughout.

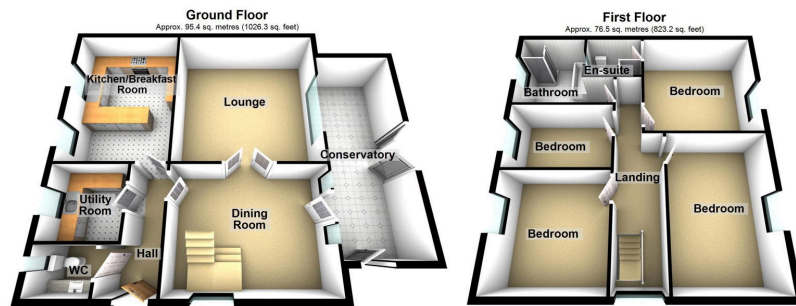
The property is located close to the Park Bridge Heritage Centre benefitting from unbridled access to the surrounding Medlock valley countryside, including Daisy Nook Country Park and offers convenient access to both Ashton-under-Lyne and Oldham town centres as well as the motorway network.

Appealing to a discerning buyer who appreciates the benefits of the location, the bespoke nature of the property and those that are looking for something out of the ordinary.

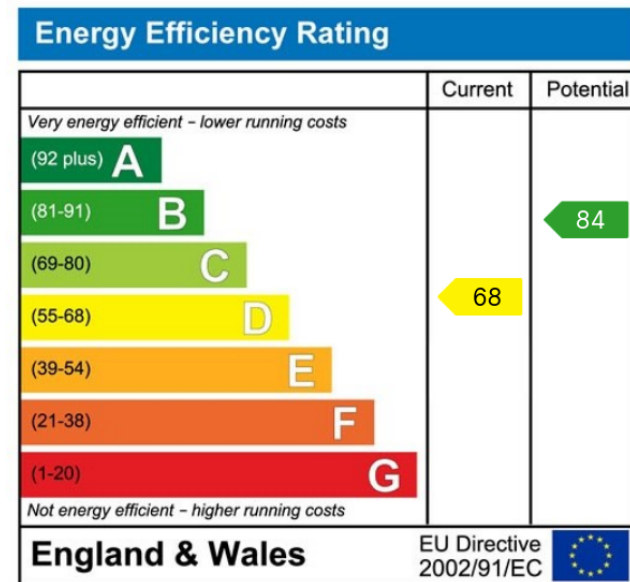
The property boasts spacious, highly flexible accommodation covering over 1,850 sq ft and is appointed with gas central heating and uPVC double glazed windows throughout.



E:
St
sl



Total area: approx. 171.8 sq. metres (1849.5 sq. feet)



Chadderton Office

509 Middleton Road,
Chadderton, Oldham,
OL9 9SH

chadderton@kirkham-property.co.uk
t: 0161 626 5688